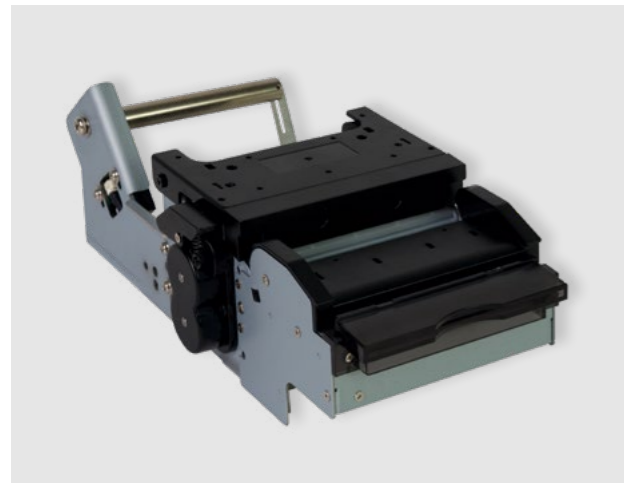
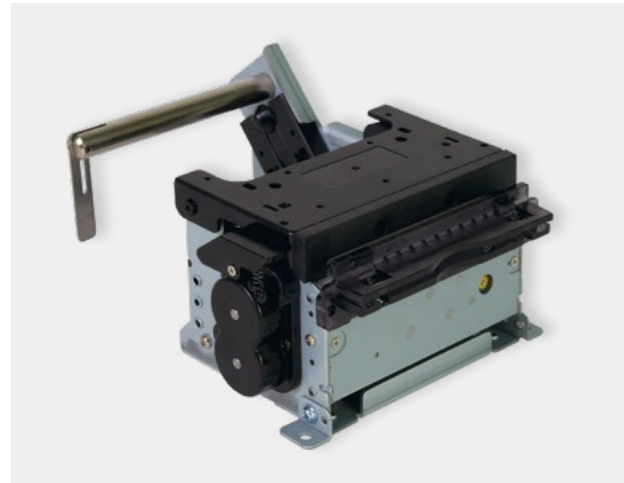




PRODUCT

830 SERIES



Shaft Arm(Standard) | HMK-830

| | W | H | D | Weight (g) |
|------|-------|-------|-------|------------|
| Φ100 | 119.9 | 174.6 | 110.8 | 847 |
| Φ150 | 119.9 | 255.9 | 164.9 | 1072 |
| Φ200 | 119.9 | 298.8 | 233.6 | 1222 |

No Arm | HMK-830U

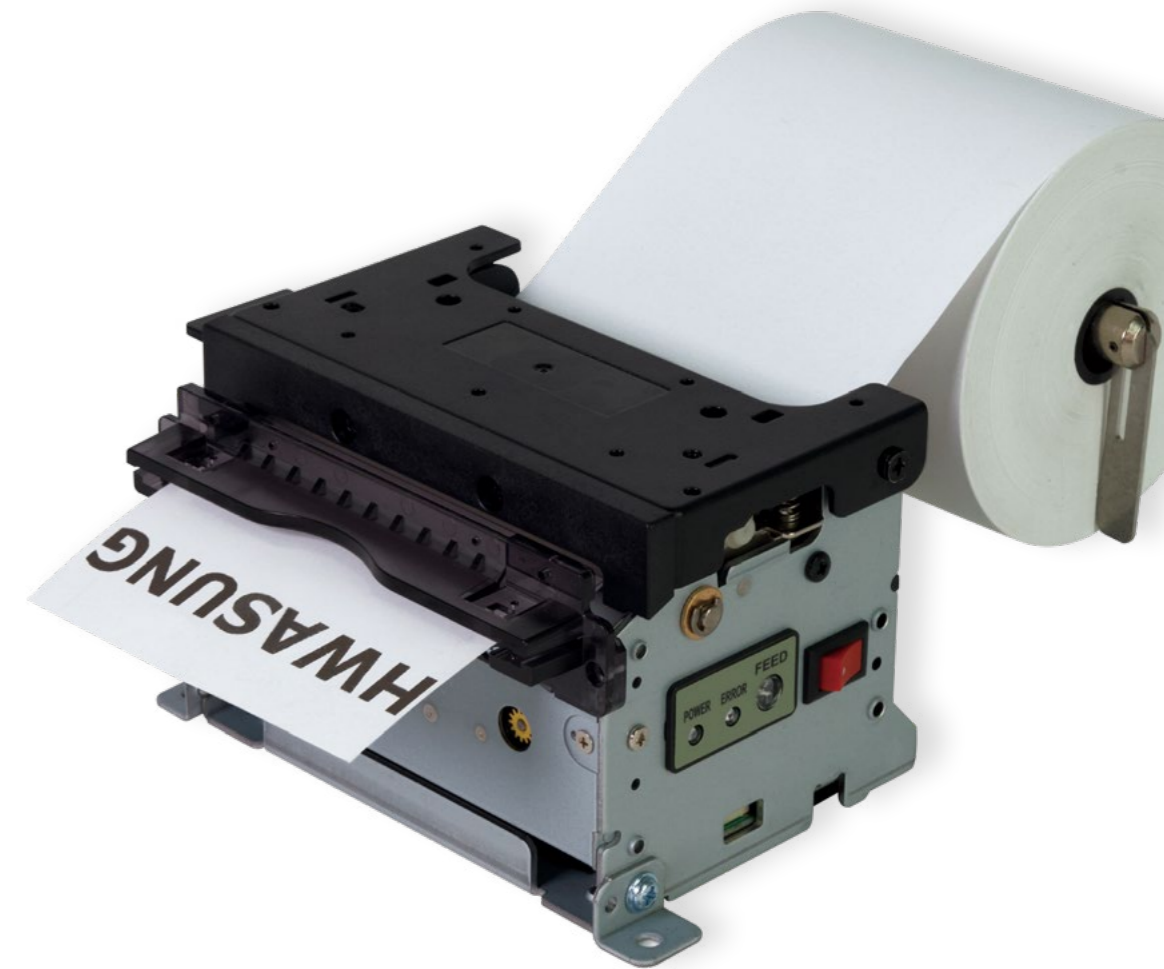
| W | H | D | Weight (g) |
|-------|------|------|------------|
| 119.9 | 91.3 | 73.3 | 662 |

Presenter | HMKP-830

| W | H | D | Weight (g) |
|-------|-------|-------|------------|
| 119.9 | 228.6 | 110.8 | 1038 |

830 SERIES

Receipt | Ticket | Label **3-inch KIOSK PRINTER**



RECIPT

TICKET

LABEL



- Fast Print Speed up to 300 mm/s (MAX)
- Powerful cutting up to 200 μm thick paper
- Jam-Free



- High Quality Performances
 - 16 greyscale supported
 - Resolution Upgrade (Option) : 300 DPI
 - Gap Sensor : Label and Linerless Label available
 - Presenter : 4 kinds of Functions



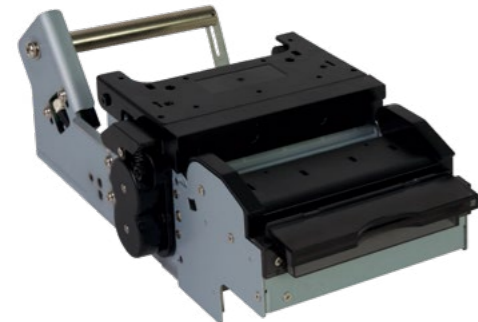
- User Centered Design
 - Paper width 25 ~ 82.5 mm (Adjustabel Type)
- Customized Service
 - Paper Holder Direction : Left / Right (Selectable)
 - Paper Roll diameter : Φ300 (MAX)

SERIES

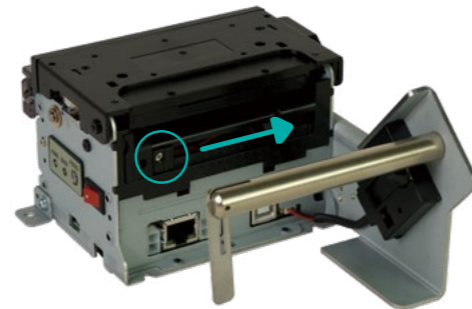
LINE UP

830 SERIES

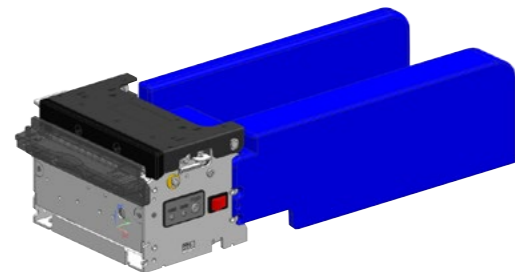
Receipt | Ticket | Label **3-inch KIOSK PRINTER**



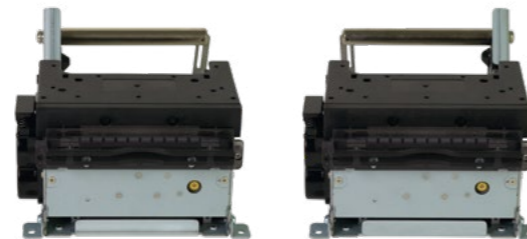
Presenter (Option)



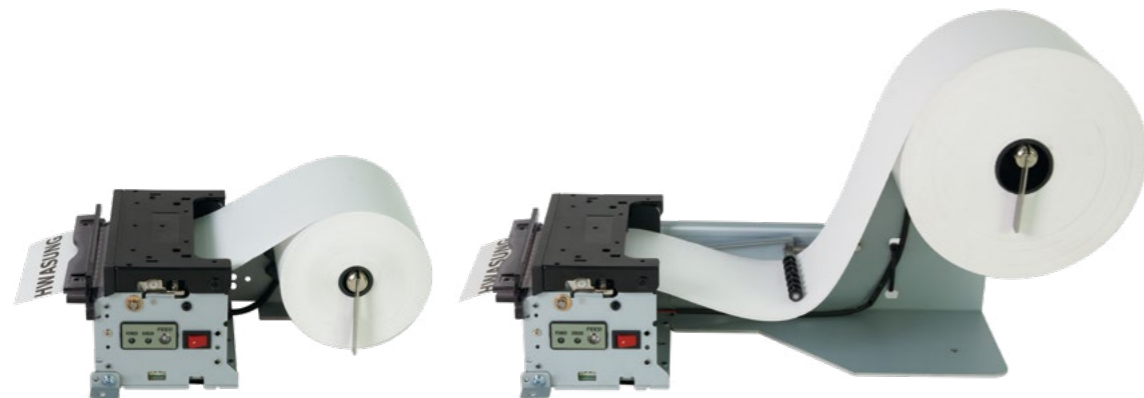
Adjustable Type (Option)



Fanfolder (Ticket)



Selectable Paper Holder Direction



Paper Roll Diameter Extended (Option)

PRINT

| | | | | | | |
|-----------------|---------------------------------|--|--|--|--|--|
| Printing method | Thermal dot line printing | | | | | |
| Cutter | Guillotine Type (Full, Partial) | | | | | |
| Resolution | 203 DPI, 300 DPI (option) | | | | | |
| Printing speed | Max 300 mm/s | | | | | |

PAPER

| | | | | | | |
|-----------------------------|----------------------------------|----|----|----|----|----|
| Dots per line | 640 dots | | | | | |
| Paper thickness | 50 μm - 200 μm | | | | | |
| Paper width (mm) | 82.5 | 80 | 80 | 72 | 60 | 58 |
| Printing width (mm) | 80 | 77 | 72 | 64 | 54 | 48 |
| Adjustable type width | 25 mm - 82.5 mm | | | | | |
| Paper outside diameter (mm) | Φ100 (standard) up to Φ300 (max) | | | | | |

PERFORMANCE

| | | | |
|------------------|---|-------------------------|---|
| Interface | Serial : RS232C | USB : USB2.0 Full Speed | Ethernet : IEEE 802.3i 10Base-T (10 Mbps) |
| Receiving Buffer | 4 Kbyte | | |
| SRAM | 256 Kbyte (optional SDRAM 64 MB expandable) | | |
| Flash ROM | 2 Mbyte (optional 128 MB expandable) | | |

ENVIRONMENT

| | | |
|-------------|--|--|
| Temperature | Operating : -20 °C ~ 45 °C | Storage : -25 °C ~ 60 °C |
| | It is recommended to use the goods between 0 to 45 degrees, otherwise life may be shortened. | |
| Humidity | Operating : 40 ~ 85% RH (non-condensing) | Storage : 40 ~ 95% RH (non-condensing) |

RELIABILITY (25°C, standard condition)

| | |
|---------------------------|-----------------------------|
| TPH(Thermal Printer Head) | 100 km (100,000,000 Pulses) |
| Cutter | 2,000,000 times |

SOFTWARE

| | |
|-----------|--------------------------------------|
| Emulation | ESC POS Available |
| Driver | Window driver, Linux/Mac CUPS Driver |
| SDK | Android SDK, Windows SDK, Linux SDK |

FONTS & GRAPHICS

| | | | | | | | | |
|----------------------|----------------|---|-------|--|--------|----------------------------|-------|--|
| Font Size | Font A | (12 x 24) 1.50 x 3.00 (mm) | | | Font B | (9 x 16) 1.13 x 2.00 (mm) | | |
| | Kor A | (24 x 24) 3.00 x 3.00 (mm) | | | Kor B | (16 x 16) 2.00 x 2.00 (mm) | | |
| Characters per Line | Printing Width | 80 mm | 77 mm | 72 mm | 64 mm | 54 mm | 48 mm | |
| | Font A | 53 | 51 | 48 | 42 | 36 | 32 | |
| | Font B | 71 | 68 | 64 | 56 | 48 | 42 | |
| | Kor A | 26 | 25 | 24 | 21 | 18 | 16 | |
| | Kor B | 40 | 38 | 36 | 32 | 27 | 24 | |
| Number of characters | English 95 | | | Extended characters (Code page) : 128 x 10 | | | | |
| Barcode | 1D | UPC-E, EAN8, EAN13, ITF, CODABAR, CODE39, CODE93, CODE128 | | | | | | |
| | 2D | PDF417, QR CODE | | | | | | |

SMPS rating

| | |
|----------------|------------------|
| Input voltage | 100V ~ 240V (AC) |
| Output voltage | 24V (DC) |
| Output current | 2.5A 60W |