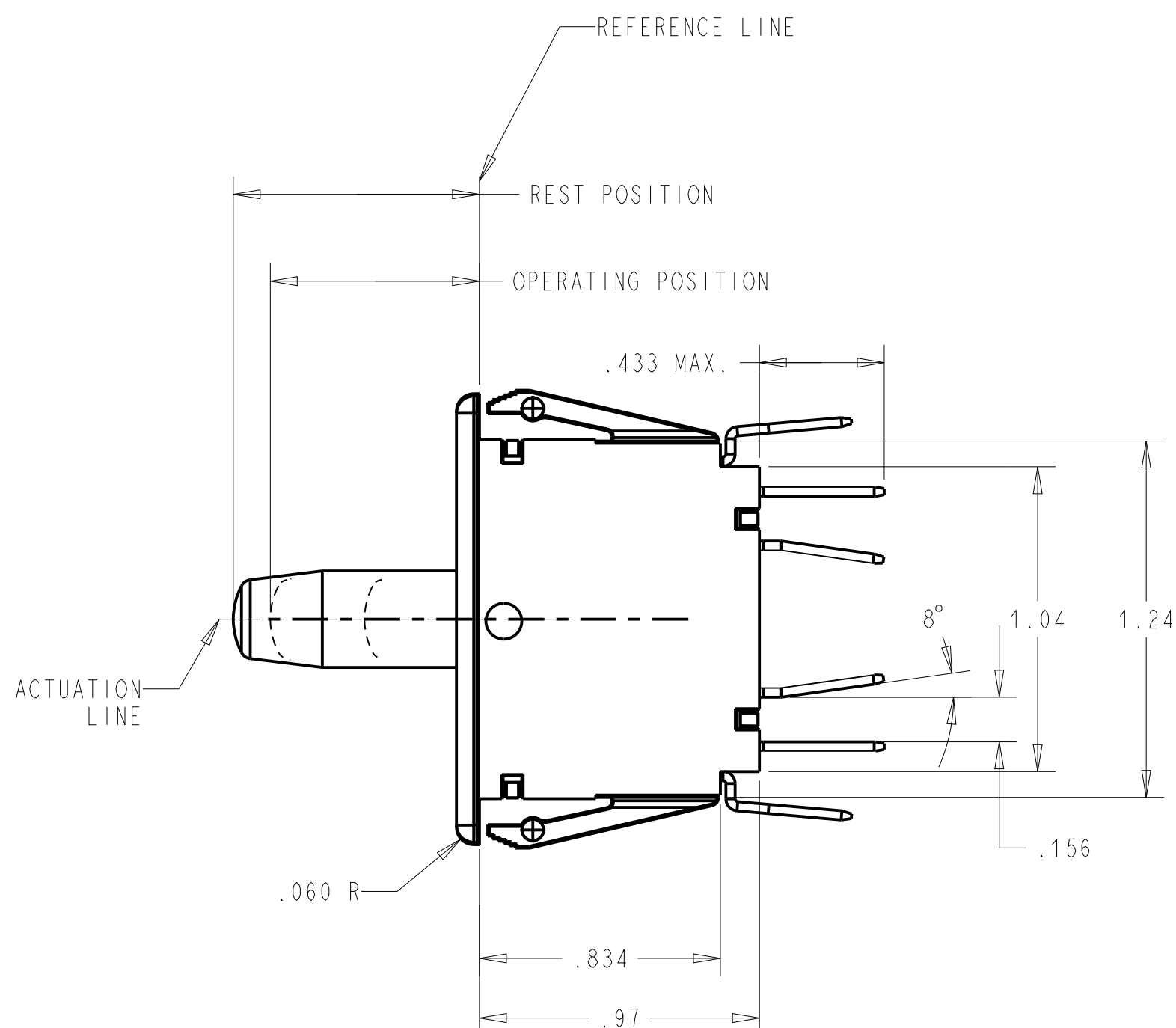
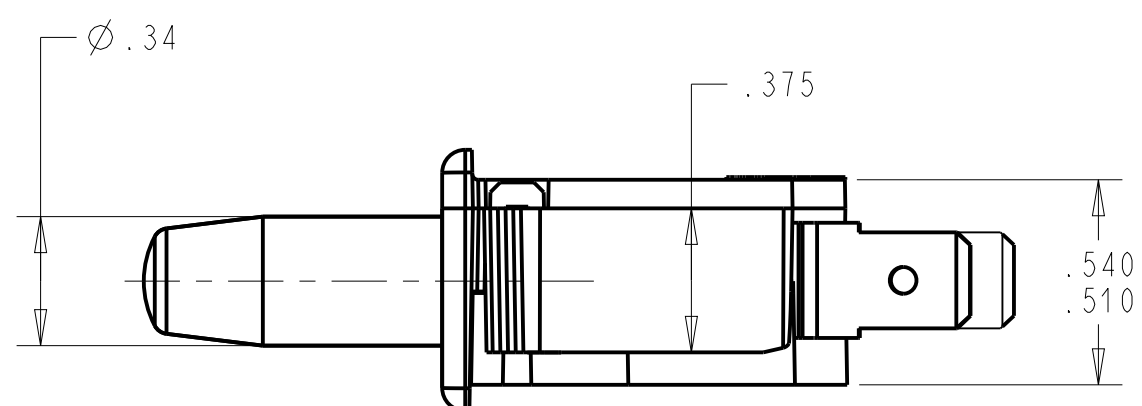
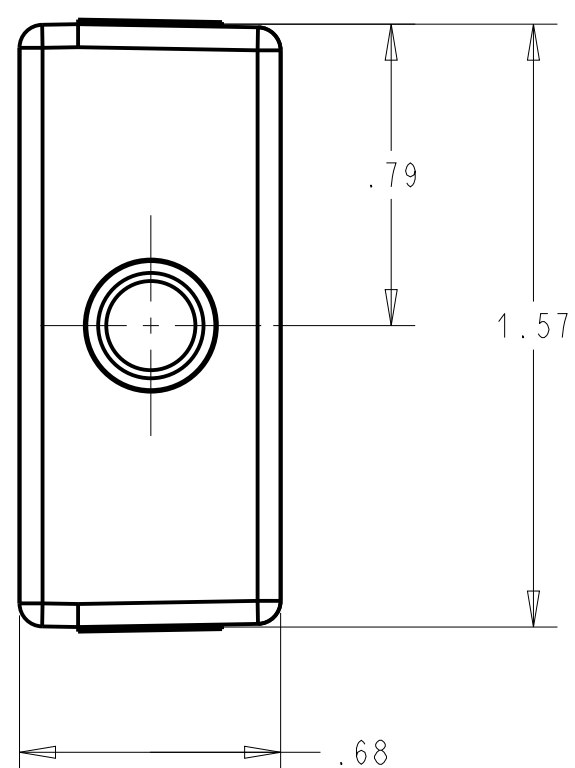


PANEL CUTOUT DETAIL  
RECOMMENDED  
PANEL THICKNESS  
.045-.100



NOTES (UNLESS OTHERWISE SPECIFIED):

1. SWITCH CHARACTERISTICS:

REST POSITION:	.845 TO .905
PRETRAVEL:	.125 MAX.
OPERATING POSITION:	.720 TO .820
OVER-TRAVEL:	.375 MIN.
MOVEMENT DIFF:	.075 MAX.
OPERATING FORCE grams	680 MAX.
RELEASE FORCE grams	170 MIN.

BUTTON POSITION  
AT FULL OVERTRAVEL .358 MAX.

ALL CHARACTERISTICS ARE TAKEN AT THE ACTUATION LINE AND MEASURED FROM THE REFERENCE LINE.

2. **UL** ELECTRICAL RATING:

10 A, 125/250 VAC  
1/3 HP, 125/250 VAC.

**UL** 10(4) A 250V, 50E3, 40T85.

3. TERMINALS:

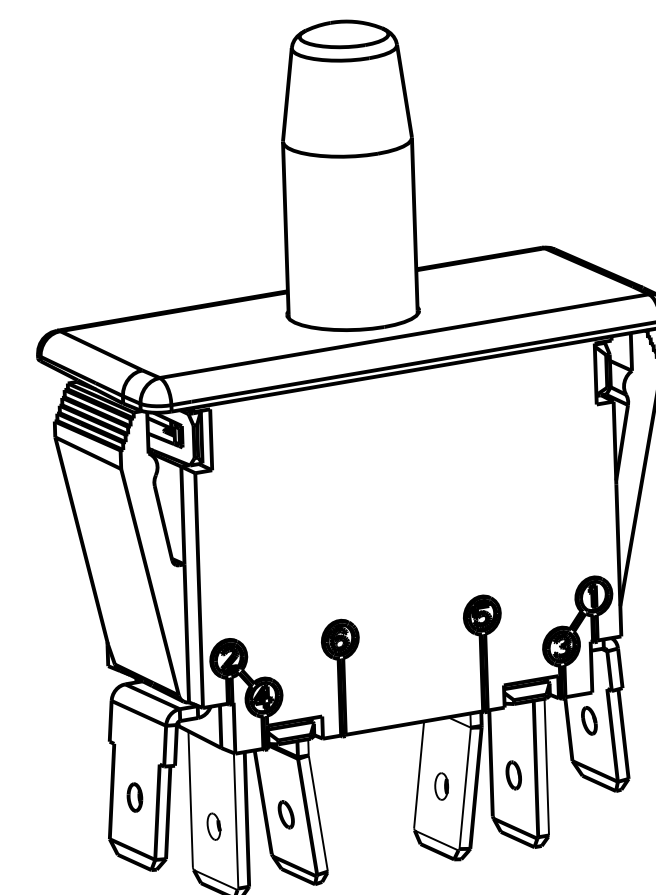
ARE .250 WIDTH x .032 THICKNESS.

4. RECOGNIZED TO U.S. AND CANADIAN REQUIREMENTS UNDER THE COMPONENT RECOGNITION PROGRAM OF UNDERWRITERS LABORATORIES, INC.

5. TEMPERATURE RATING:  
-40°C TO +85°C

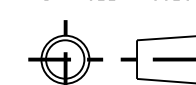
6. COLORS: FACEPLATE - WHITE  
BUTTON - WHITE

(C)



DWN: J. DOLNIK  
APVD: RC  
DATE: 28-Apr-03

THIRD ANGLE PROJECTION



CONFIDENTIAL AND PROPRIETARY:  
ALL INFORMATION OR INVENTIONS CONTAINED IN THIS DOCUMENT OR DERIVED FROM THE INFORMATION THEREIN IS OWNED BY ZF ELECTRONIC SYSTEMS, AND IS CONFIDENTIAL AND PROPRIETARY. REVIEW OR POSSESSION OF THIS DOCUMENT INDICATES AGREEMENT THAT SUCH INFORMATION AND INVENTIONS WILL NOT BE DISCLOSED, REPRODUCED OR OTHERWISE USED IN ANY WAY WITHOUT EXPRESS WRITTEN PERMISSION FROM AN AUTHORIZED REPRESENTATIVE OF ZF ELECTRONIC SYSTEMS.



ZF Electronic Systems

11200 88th AVE. PLEASANT PRAIRIE, WI 53158

NAME / DESCRIPTION

SPECIFICATION DRAWING

C	Z000377659	19-Sept-16	JPD	ELL
REV	ECO NO.	DATE	PREP	APVD

PROJECT/ CSR	DWG UNITS	X.XX	X.XXX	ANGLES
4000000138	INCH	± 0.02	± 0.015	± 5.0 °

TOLERANCE UNLESS SPECIFIED	C	ITEM NO.	OF 79-00AB
SCALE: 2.000	SH	1	OF 1

ORIGINAL ON PRO/E