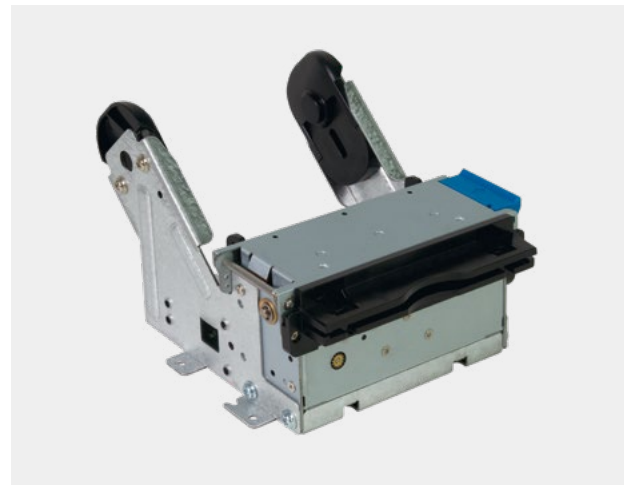




PRODUCT

072 SERIES



HMK-072			
W	H	D	Weight (g)
118.2	131.7	88.7	559



HMK-072			
W	H	D	Weight (g)
118.2	142.6	88.7	590

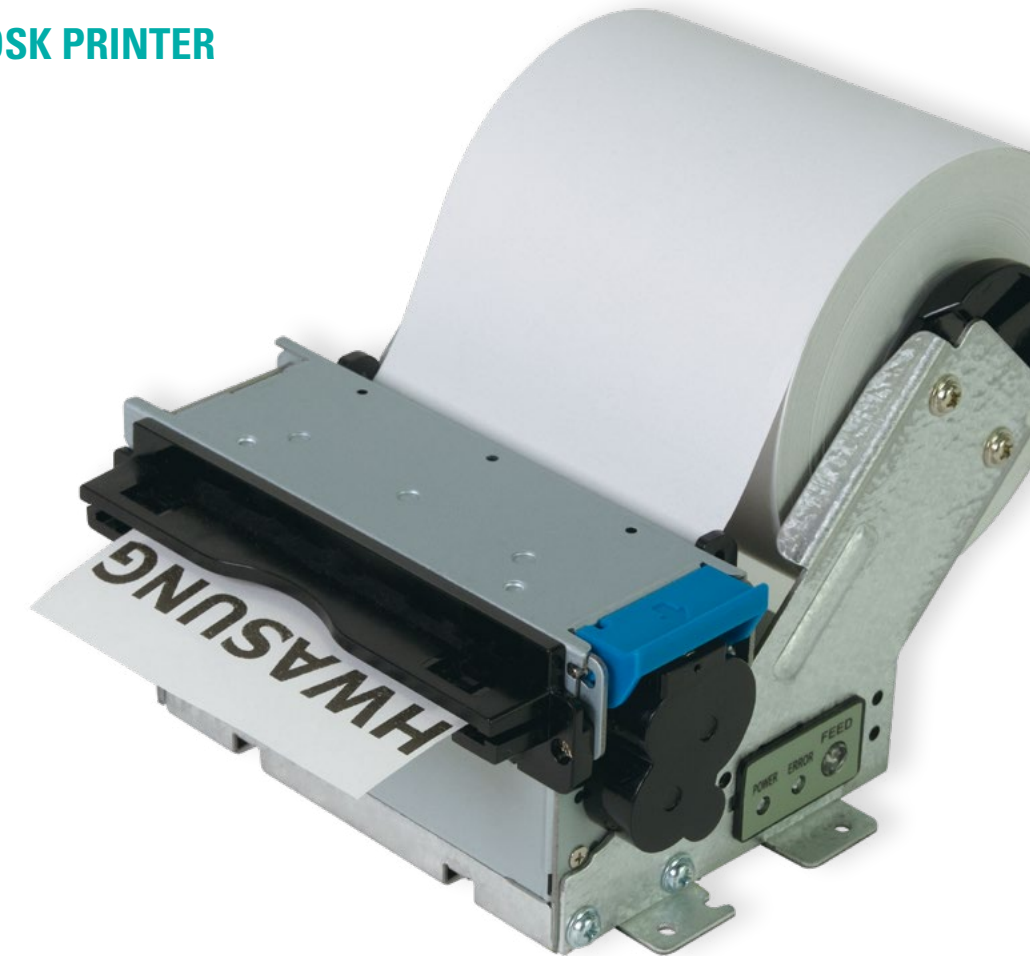


HMK-072U			
W	H	D	Weight (g)
123	60.6	80.3	430

072 SERIES

SLIM & COMPACT

Receipt | Ticket **3-inch KIOSK PRINTER**



- RECIPT
- TICKET



- Fast Print Speed up to 200 mm/s (MAX)
- Ultra Slim and Compact Design
- 118 x 132 x 89 (mm) (standard)
- Only 559 g (standard)
- Jam-Free



- High Quality Performances
- 16 greyscale supported
- Presenter : 4 kinds of Functions
- Sensor Function :
Cover Open Sensor, Paper Detect Sensor,
Black Mark Sensor, Cutter Home Sensor,
Near End(Paper Low) Sensor



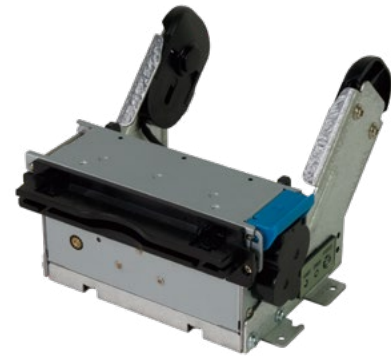
- User Centered Design
- Paper width : 80, 72, 60, 58 (mm)
- Customized Service
- Various Paper Holder :
Ultra (No Arm), Lever (Standard), Shaft, Fanfolder
- Paper Roll Diameter : Φ 250 mm (MAX)

SERIES

LINE UP

072 SERIES

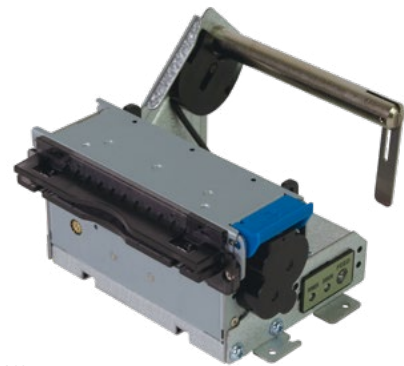
Receipt | Ticket **3-inch KIOSK PRINTER**



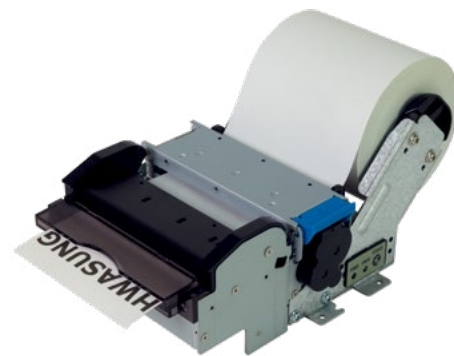
Standard (Horizontal / Lever)



Vertical Type



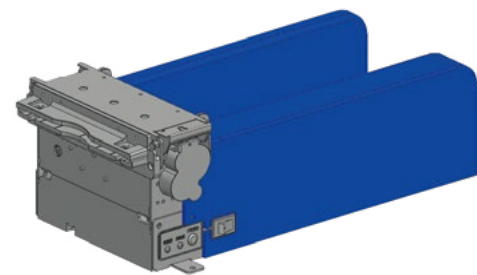
Shaft Arm



Presenter (Option)



Ultra (No Arm)



Fanfolder (Ticket)

PRINT

Printing method	Thermal dot line printing				
Cutter	Guillotine Type (Full, Partial)				
Resolution	203 DPI				
Printing speed	Max 200 mm/s				

PAPER

Dots per line	640 dots				
Paper thickness	50 μm - 150 μm				
Paper width (mm)	80	80	72	60	58
Printing width (mm)	77	72	64	54	48
Paper outside diameter (mm)	Φ80 (standard) up to Φ250 (max)				

PERFORMANCE

Interface	Serial : RS232C	USB : USB2.0 Full Speed	Ethernet : IEEE 802.3i 10Base-T (10 Mbps)		
Receiving Buffer	4 Kbyte				
SRAM	256 Kbyte (optional SDRAM 64 MB expandable)				
Flash ROM	2 Mbyte (optional 128 MB expandable)				

ENVIRONMENT

Temperature	Operating : -20 °C ~ 45 °C	Storage : -25 °C ~ 60 °C
	It is recommended to use the goods between 0 to 45 degrees, otherwise life may be shortened.	
Humidity	Operating : 40 ~ 85% RH (non-condensing)	Storage : 40 ~ 95% RH (non-condensing)

RELIABILITY (25°C, standard condition)

TPH(Thermal Printer Head)	100 km (100,000,000 Pulses)
Cutter	2,000,000 times

SOFTWARE

Emulation	ESC POS Available
Driver	Window Driver, OPOS Driver(Serial Only), Linux/Mac CUPS Driver
SDK	Android SDK, Windows SDK, Linux SDK

FONTS & GRAPHICS

Font Size	Font A	(12 x 24) 1.50 x 3.00 (mm)	Font B	(9 x 16) 1.13 x 2.00 (mm)			
	Kor A	(24 x 24) 3.00 x 3.00 (mm)	Kor B	(16 x 16) 2.00 x 2.00 (mm)			
Characters per Line	Printing Width	80 mm	77 mm	72 mm	64 mm	54 mm	48 mm
	Font A	53	51	48	42	36	32
	Font B	71	68	64	56	48	42
	Kor A	26	25	24	21	18	16
Number of characters	English 95	Extended characters (Code page) : 128 x 10					
	Barcode	1D	UPC-E, EAN8, EAN13, ITF, CODABAR, CODE39, CODE93, CODE128				
		2D	PDF417, QR CODE				

SMPS rating

Input voltage	100V ~ 240V (AC)
Output voltage	24V (DC)
Output current	2.5A 60W